



WELLTECH

WellGate 3804 FXO

Converge PSTN and VoIP Services into a Network

An easy access to PSTN from IP world



WellGate 3804 FXO gateway behaves as a bridging between local PSTN and IP network for voice and FAX services. It smoothly transport voice and FAX services between PSTN and IP network without any distortion.

The WellGate 3804 gateway provides voice and fax services over IP network with H.323 v3 protocol. By connecting with your existing ADSL or cable Modem service Which allows the use of a single network for voice and fax services with consequent saving in network infrastructure and greatly reduced telephone charges. Ideal solution for providing low cost communications between headquarters and branch offices in the world, as well as for SOHO and office telephony applications.

The WellGate 3804 provides up to four FXO ports connecting to local PSTN. It is an interface to access PSTN with IP-PBX solution. An 10Base-T interface connects local Ethernet network with IP Phone and H.323 GateKeeper or Call Manager. The data and voice services are working in a local Ethernet network. The TOS setting of WellGate 3804 provides voice priority in IP network.

Using two wire loop start Foreign Exchange Office (FXO) interfaces, WellGate 3804 FXO gateway convert packetized Voice and FAX to local circuit switching PSTN network. It also converts the voice and fax traffic to IP network with packetized form. The packetized data is sent via an Ethernet connection to IP network.

WellGate 3804 provides management features for system Configuration, Debug and Maintenance via RS-232C COM port and TELNET.

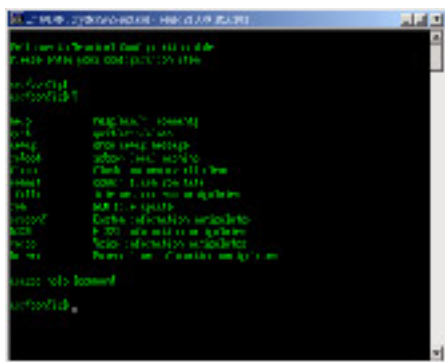
For applications such as

- ┆ IP-PBX access to local PSTN call
- ┆ Dialing PSTN call from carrier-based IP network
- ┆ PSTN to PSTN call via IP network
- ┆ Saving cost for international or long distance call
- ┆ ITSP (Internet Telephony Service Provider)
- ┆ Multi-nation Enterprise
- ┆ SOHO
- ┆ Office telephony services

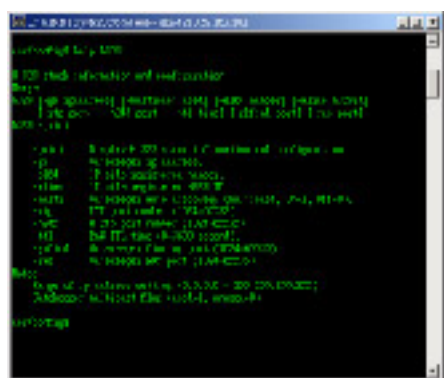
Benefits

- ┆ Easy access to PSTN from IP
- ┆ Cost saving - save long and international call expense by using IP network.
- ┆ No extra investment - just take advantage of existing Ethernet LAN and IP environment.
- ┆ Easy interface with Cable Modem, ADSL Modem and Leased Line equipment
- ┆ Space saving - compact size: 221mm(W)*42mm(H)*217mm(L)

< System Configuration Screen By TELNET >



< Ask for HELP with help/man/? Anytime when you need >



Dimensions : 221mm(W)*42mm(H)*217mm(L)

Technical Specification

Interface

- ┆ A 10BaseT Ethernet RJ45 port
- ┆ Asynchronous Console RS-232C DB-9 connector
- ┆ Four Analog PSTN (FXO) RJ-11 port
- ┆ AC power input outlet
- ┆ AC power switch

Features

- ┆ ITU-T H.323 v3 compliance
- ┆ Automatically GateKeeper Discovery
- ┆ Provide peer-to-peer Mode(Non Gatekeeper needed) selection
- ┆ Support auto-attendant (Tone or voice greeting)
- ┆ Dimensions : 221mm(W)*42mm(H)*217mm(L)
- ┆ Line hunting
- ┆ PSTN Polarity Reversal Detection
- ┆ 4 RJ-11 FXO ports
- ┆ Provide 2nd dial tone to PSTN
- ┆ E.164 Common Dial Plan
- ┆ DTMF Dialing
- ┆ DTMF detection / generation
- ┆ TFTP/FTP software upgrade
- ┆ Remote configuration / reset
- ┆ LED indication for system status
- ┆ LAN interface : One RJ-45 connector for 10Base-T
- ┆ MS-Netmeeting v3.0 compatible
- ┆ Support Fix IP and DHCP
- ┆ Provide QOS function with TOS(Type of Services) setting
- ┆ Provide T.38/FAX and voice Auto-Switching

Audio Feature

- ┆ Codec -- G.711 A/u-Law, G.723.1, G.729A
- ┆ VAD (Voice Activity Detection), CNG (Comfort Noise Generate)
- ┆ G.168/165-compliant adaptive echo cancellation
- ┆ Dynamic Jitter Buffer
- ┆ Bad Frame Interpolation
- ┆ Up to four FXO analog port
- ┆ Completed voice band signaling support
- ┆ Receive Caller ID (DTMF or FSK) from PSTN
- ┆ Provide Inbound or Outbound DTMF generation/detection between LAN and PSTN interface
- ┆ Call Transfer (H.450.2)
- ┆ Call Hold (H.450.4)
- ┆ Gain/Attenuation Settings
- ┆ Provide Progress Tone: Dial tone, busy tone, call-holding tone and ring-back tone

Management Features:

- ┆ Two easy ways for system configuration
- ┆ Console port : RS-232C port
- ┆ TELNET

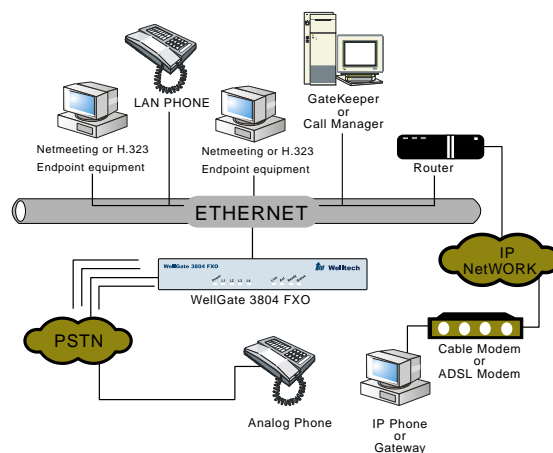
LED indicator for system status

- L1 to L4 : LED indicator for PSTN port 1-4 status
- POWER : Power ON indication
- LINK/ACT : 10Base-T status
- STATUS : WellGate 3804 register to GateKeeper status
- READY : WellGate 3804 works status

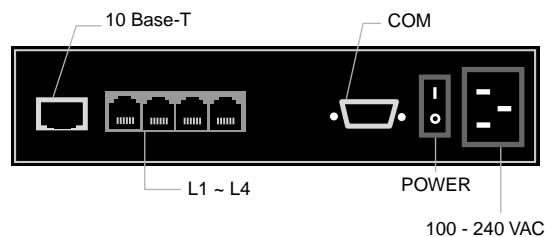
Compliance :

- FCC
- CE
- VCCI / JAPAN
- BSMI / TAIWAN

IP-PBX Application



Rear Panel Drawing



Welltech Computer Co., Ltd.
 13F-4, No.150, Jian Yi Road,
 Chung-Ho, Taipei, Taiwan
 Tel: +886-2-82265699
 Fax: +886-2-82265799
 E-mail: sales@mail.welltech.com.tw
 Http://www.welltech.com.tw